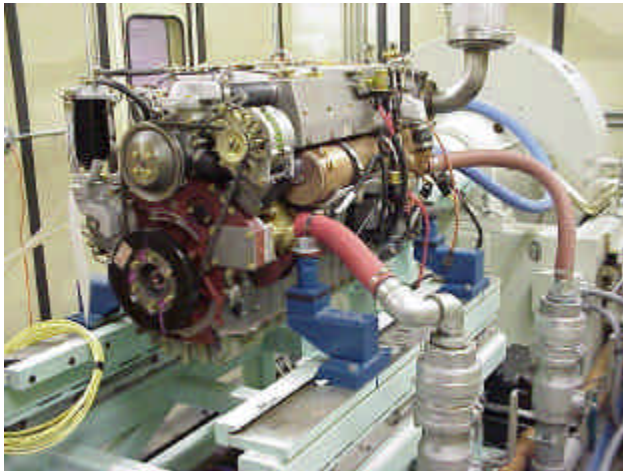




Emprise Corporation

DIESEL ENGINE TEST STANDS

Emprise Corporation specializes in the design construction, installation and commissioning of complete, turnkey engine test cells. Past projects include small, portable engine test cells as well as large, brick and mortar facilities. Our experience ranges from 15 hp industrial diesels to large 8000 hp locomotive diesels. These facilities can support all types of engine testing including production, audit, research and development and emissions certification.



Our facilities expertise also includes the design and fabrication of engine testing support systems such as fuel (liquid and gaseous), water, oils, coolants, exhaust, combustion air, data acquisition and control, safety and fire protection systems.

Since 1981, Emprise Corporation has specialized in the design and fabrication of custom test stands and facilities. Our diverse staff of mechanical, electrical, automotive and software engineers carry projects from concept to commissioning. We build new and modernize old facilities.

Emprise Corporation

3900 Kennesaw 75 Parkway, Suite 125
Kennesaw, GA 30144-6430

www.emprise-usa.com

Toll Free: (800) 278-2119

Phone: (770) 425-1420

Fax: (770) 425-1425

email: info@emprise-usa.com

Serving the Automotive Industry Since 1981



Emprise Corporation

SPECIALISTS IN DIESEL ENGINE TEST FACILITIES

Diesel Engine Experience Includes...

- Automotive
- Locomotive
- Industrial
- Turbochargers
- Marine
- Power Generation

Clients Include...

- Deutz Diesel
 - Navistar International
 - Caterpillar / Comprex
 - Alternative Fuel Systems
 - Electro-Motive Division, GM
 - Yanmar Diesel America
 - Garrett / AlliedSignal
 - Ricardo
-

Emprise Corporation

CUSTOM TEST STANDS AND FACILITIES

Cross industry experience in:

- Comprehensive engineering & design services
- Fabrication, assembly, installation
- Software development
- Systems integration
- PC/PLC programming
- Manual / automatic controls
- Training, field support



**Engineering Small Component Test
Benches to Large Engine Test Facilities**
